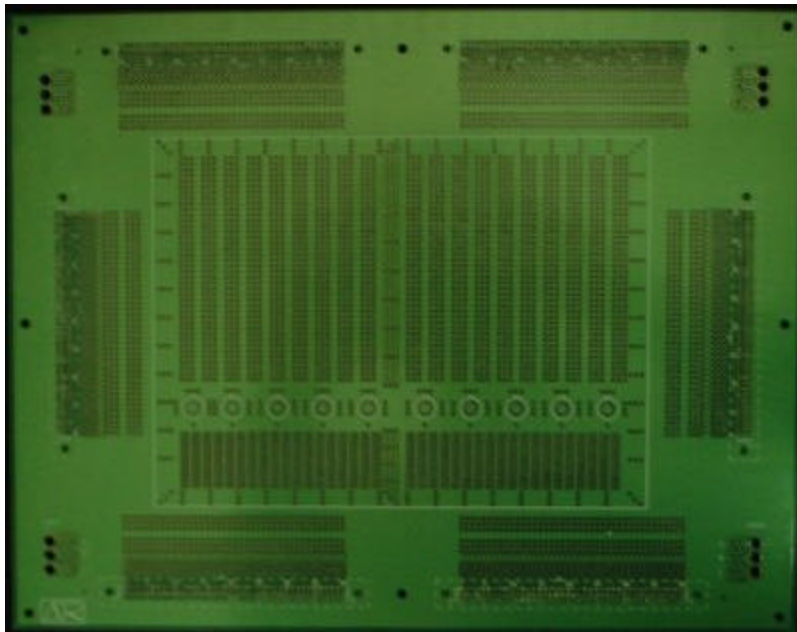




## Applied Test Resources

### **DPB8800** DUT Prototype Board

The DPB8800 is an 11" x 14" PC board used to interface the tester with the Device Under Test (DUT). This board contains generous area for custom circuitry and extra relays. The DPB8800 is also available with standard solutions to test families of components like Op-Amps, Regulators, ADC's and DAC's. +/-15 V and +5 V are available to support circuitry biasing.



\*All specifications are subject to change without notice.  
Publishing Date: May 26, 2004